

PHOMI®

Modified Clay Material
CLADDING & FACADE





Care for The Earth

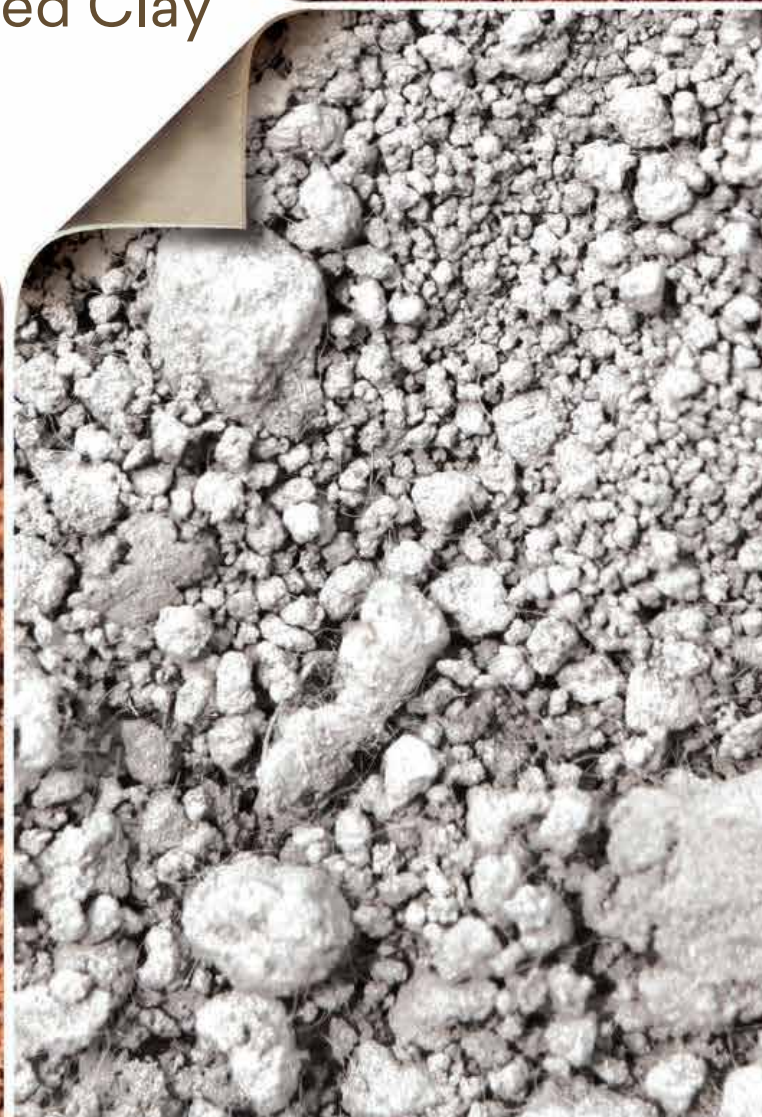
Living in Harmony with Nature

A classic Timeless Material

Your Well Being is Our Concern



Modified Clay



Modified Clay Material

New industrial raw material

The birth of Modified Clay new industrial raw material means inorganic clay can be modeled go-as-you please, just like plastic. The base materials are being constituted and bonded together by using low heat temperature process which is also patented by us.

PHOMI currently has various range of Modified Clay products for interior and exterior use which also include both flooring and cladding applications as well as furniture laminates which are recyclable and can save 80% of energy compare to traditional building material.

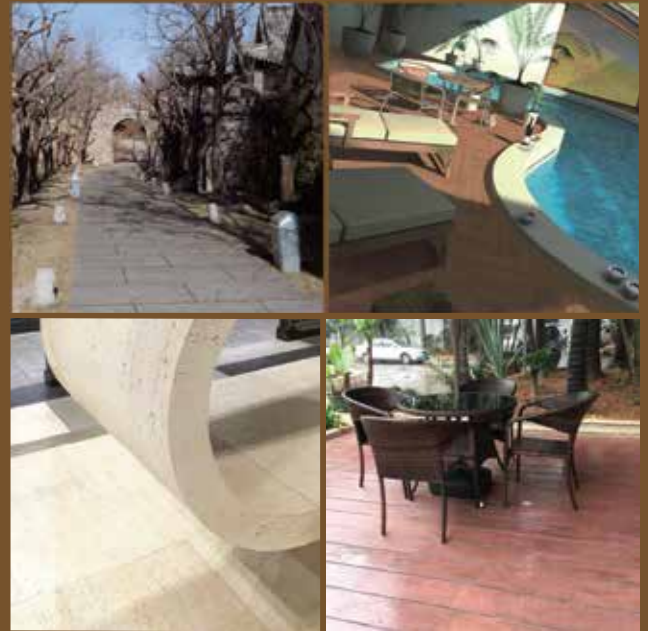
PHOMI's products are versatile and can be applied and use for other applications including used as a substitute against traditional method of road making using stone aggregates and asphalt or concrete. It can also be used for track and field as well as flooring for gyms. Hence, the products are very design friendly, can come in board form, shape form and engraving form, leather print form making it usable for home, construction and automobile.

PHOMI's success in the market place would however, requires all the efforts and co-operation and market feedback of its business partners in various industries to further promote PHOMI's brand visibility which would then see wider use of such green materials benefitting our beloved Earth.



MCM Unfired Flexi Clay Cladding

Breathability, durability,
Safety—suitable for high-rise,
irregular space and building
refurbishment



MCM Unfired Flexi Clay Flooring

Anti-slip, comfortable.

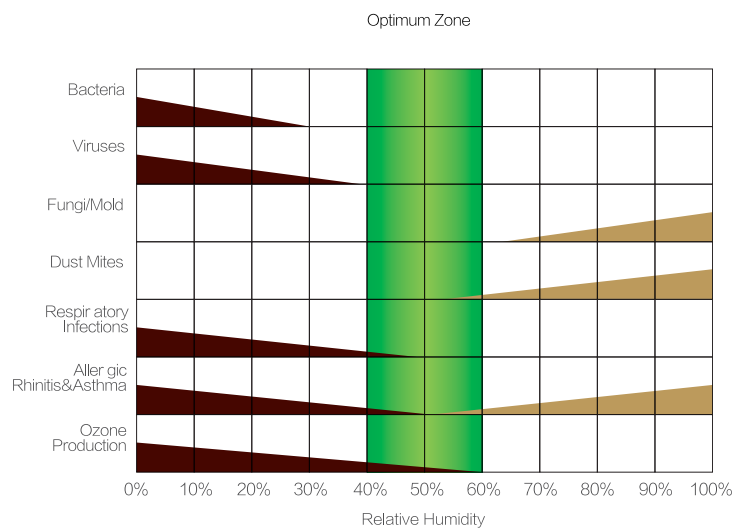
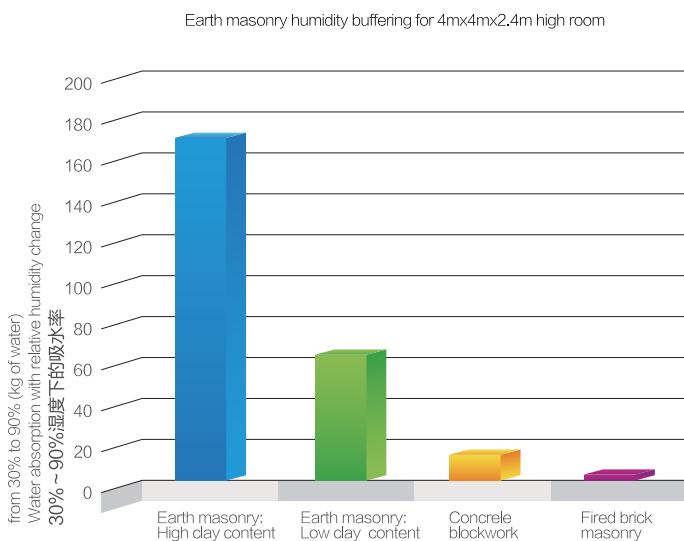
Breathable

Moisture Regulating Building Material

Unfired Flexi Clay Cladding and Flooring is made from MCM modified clay materials. The most attractive are their functional properties, principally, that of breathability and known abilities to regulate relative humidity (RH). Next to air tightness and embodied energy, breathability is possibly the most critical consideration in building design.

Unfired Clay can absorb and desorbs indoor humidity faster than any other building material.

General Speaking, Clay can regulate relative interior humidity between 40% and 70%. (Arundel, A. V. 1986) By keeping RH between 40% and 70% research has shown that the likelihood for airborne infectious bacteria and virus to survive is the lowest.



TRAVERTINE



052



052056



031Y

Product Description

Travertine almost duplicate the full natural travertine. Travertine can be applied to exterior wall, all kinds of commercial space, public, office, entertainment space, family background wall, and bathroom etc.

Application Tips

1. Paste: Just similar to the natural stone, there are some holes on it, must use the same color adhesive to paste it so it will match with the Travertine color.
2. Grout: Suggest to do grouting. Do it by using the same color grout, stainless steel strip or silicone glue gun.
3. Clean Protection: when it is used for flooring, need to brush 3-4 times of stone sealer after pasting the products. If you used it for indoor, just need to brush 2-3 times of stone sealer for brightening purpose.
4. The base should be smooth. Need to use V-tooth trowel to paste adhesive on the back of product to create V pattern. Do not paste the adhesive with flat pattern on the back of the product.

Packing Information

Product Size (mm)	Box Size (mm)	pc/box	Kg / box	m ² / box
1200x600	1230x620x65	16	50 - 55	11.52
600x300	620x320x90	26	21 - 23	4.68

Notes (All Products) :
Volume of a box might be varied/different depends on the colors or batches. (
Ask PHOMI staff for further information.



052 Running Bond 600x300mm



052KZ 3 Sizes Combination 600x300 600x200 600x100mm



031YZD Stack Bond 600x300mm



031Y 3 Sizes Combination 600x300 600x200 600x100mm



Level 21 Mall,
Denpasar



05256



Sponji,
Elang Laut



052KZ

OASIS STONE



OASIS 052



OASIS STONE RAINE



OASIS STONE WINDE

Packing Information

Product Size (mm)	900x590	1800x590
Box Size (mm)	920x620x80	wooden pallet
pc/box	20	up to 80
Kg / box	55 - 60	150-160
m ² / box	10.62	85

Product Description

Oasis Stone has long corrugated board and natural color, just like a landscape painting with no repeat. Oasis Stone can be applied for ceiling, exterior wall, roof, tunnel, all kinds of commercial space, public places, entertainment places and bathroom.

Application Tips

1. Oasis Stone has a rough surface and various thickness like a natural stone. Suggest to do the grouting with same color grout.
2. After paste on the floor, should brush 3-4 times with stone sealer, to anti-foul and make it easier to clean up.



Oasis Stone Raine 2 Sizes
Combination 600x300 600x150mm



Oasis Stone Raine/Winde
900x200mm



Oasis Stone Raine/Winde 600x600mm



Oasis Stone Foge 600x300mm



OASIS STONE WINDE

SLATE



SLATE 052



SLATE 228



SLATE 054



SLATE 038

Packing Information

Product Size (mm)	Box Size (mm)	pc/box	Kg / box	m ² / box
1150x575	1175x595x65	16	55 – 60	10.58
575x286	610x310x90	24	15 – 19	3.95

Product Description

Slate has long corrugated board and natural color, just like a landscape painting with no repeat. It can be applied to entertainment places, commercial space, bathroom wall, floor, ceiling, exterior wall, sidewalk, and floor near the swimming pool.

Application Tips

1. Slate surface has a rough surface and various thickness like a natural stone. Suggest to do the grouting with same color grout.
2. After paste on the floor, should brush 3–4 times of stone sealer, to anti-foul and easier to clean up.



Slate Cream Mix Color 575x286mm



Slate Grey Mix Color 3 Sizes Combination 575x286 575x190 575x90mm



Slate Arte 575x286mm



SANDSTONE



SANDSTONE 052



SANDSTONE STREAME



SANDSTONE VISION

Packing Information

Product Size (mm)	1200x590	600x290
Box Size (mm)	1230x620x65	620x320x90
pc/box	20	30
Kg / box	60-64	18-20
m ² / box	14.16	5.22

Product Description

Sandstone is designed based on the Australian sandstone, it has a natural color with no repeat and give a elegance sense. It can be applied to entertainment places background wall, commercial space, bathroom wall, ceiling and exterior wall.

Application Tips

The base should be smooth and flat. Need to use V-tooth trowel to paste adhesive on the back of product to create V pattern. Do not paste the adhesive with flat pattern on the back of the product. Use slab rubber to hit the product, and pressing with finger is not allowed, because it will cause the product surface uneven. Suggest to do the grouting with same color grout or silicone glue. Or leave 2mm natural gap for "Brick" style installation.



Sandstone Streame 575x286mm



Sandstone Sunshine 2 Sizes
Combination 575x286 286x190mm



SANDSTONE 052



Sandstone Cloud 2 Sizes Combination 1200x600 600x600mm



SANDSTONE 056



SANDSTONE CLOUDE

CROSSARD MUSHROOM STONE



052



221



038

Packing Information

Product Size (mm)	800x400
Box Size (mm)	wooden pallet
pc/box	72
Kg / box	300-350
m ² / box	23

Product Description

Crossard Mushroom Stone is thick and heavy, but compared to a real stone it is actually lighter and it can bear a strong impact.

Application Tips

Suggest to do grouting. Paste adhesive around the edge of the back side. Need to put stainless steel cement nail at each edge. Use the same color grout for grouting.

3 STEPS INSTALLATION



Step 1: Paste adhesive at the edge part on the back of the product.



Step 2: Put stainless steel cement nails at the four corners and middle edges of the product.



Step 3: Use the same color grout for the grouting, and to cover the nail edges.



External Corner: Installing with the whole piece, 45° Chamfer, using the same color for grouting.

DEVINE MUSHROOM STONE



052



228



038

Packing Information

Product Size (mm)	790x380
Box Size (mm)	900x900x1050
pc/box	136
Kg / box	400-500
m ² / box	40.8272

Product Description

It can be applied to the podium, interior wall, exterior wall, and floor.

Application Tips

Suggest to paste adhesive all over the back side.



228



031



45°



TASTE PARADISE,
PLAZA INDONESIA

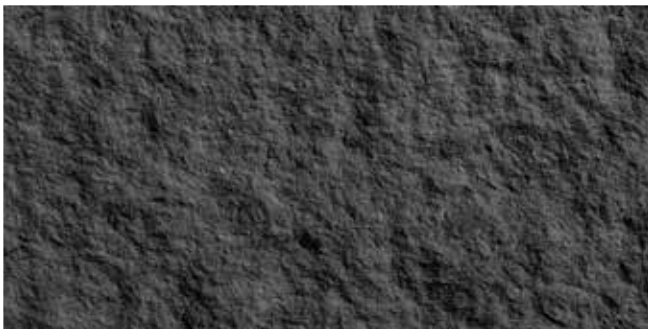
GRANITE



052



366



043

Packing Information

Product Size (mm)	1590x580
Box Size (mm)	1690x670x525
pc/box	50
Kg / box	380-420
m ² / box	46.11

Product Description

Granite has a very rough texture, rubbing, and it is a good replacement of natural granite stone; It can be applied to the podium and exterior wall.

Application Tips

Suggest to paste adhesive all over the back side. Suggest to seam with gap. Use the same color grout for grouting.



038 3 Sizes Combination 600x310 600x200 600x100mm



052 1590x600mm



CUT STONE



052



052

Packing Information

Product Size (mm)	1200x600	600x300
Box Size (mm)	1230x620x65	620x320x90
pc/box	16	22
Kg / box	58-64	11-15
m / box	11.52	3.96

Product Description

Cut Stone is elegant and classic. It can be used for corridors, lobby, living room, commercial spaces, column and background wall.



Application Tips

Suggest to past adhesive all over the back side. Leave 1mm natural gap when doing "Brick" style.

INIFINITI STONE



058



031



043

Packing Information

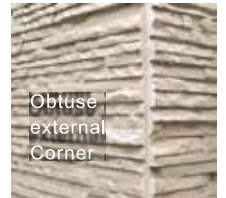
Product Size (mm)	580x300
Box Size (mm)	620x320x90
pc/box	10
Kg / box	13-18
m ² / box	1.74



Product Description

Inifiniti Stone can be applied to all kinds of commercials places, public places, entertainment spaces, exterior wall, interior wall, family house and office background wall.

External Corner:



Obtuse
external
Corner



45°
Chamfer

Application Tips

The application of Inifiniti Stone is the same as natural stone, it need be to joint in echelonment or "Brick" style and paste closely. For interior installation, it can used adhesive. This product is a duplicate of nature stone with a strong sense of concave. It is normal to have holes and it won't affect the usage.

35 PIECE STACK STONE



031030



315328



043



043



043

Packing Information

Product Size (mm)	590x280
Box Size (mm)	620x320x90
pc/box	10
Kg / box	9-12
m ² / box	1.652

Product Description

35 Piece Stack Stone give a look of stacking different pieces long strip stones together while keeping your installation work easier.

Application Tips

Suggest to paste adhesive all over the back side. Suggest to paste the products in echelonment or "Brick" style .



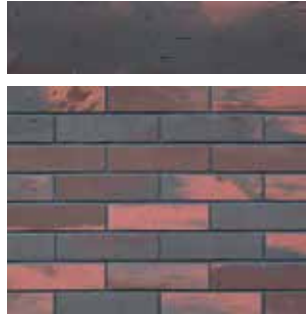
Unfired Flexi Clay **MCM FACING BRICK**

MCM Facing Brick has the same unique texture as kiln-fired brick, however, flexible and thin.

G-SERIES BRICK



031043



308317

Packing Information

Product Size (mm)	230x58
Box Size (mm)	460x260x160
pc/box	450
Kg / box	21-24
m ² / box	6.003

Product Description

G-Series Brick texture seems like after fire burnt, it shows different shades, color, and have a strong artistic appeal. It can be applied for an old building renovation or a history scenery spaces.

Application Tips

Needs to use adhesive on the backside of the product.



DP Mall Semarang
by Bobos Design



Bakmi GM
Taman Anggrek Branch

R-SERIES BRICK



308317



085089



031043



221231



Warunge DW,
Sragen Jawa Tengah



All Nite & Day Residence,
Kebon Jeruk



Packing Information

Product Size (mm)	222x63
Box Size (mm)	460x260x160
pc/box	300
Kg / box	15-18
m ² / box	4.1958

Product Description

R-Series Brick surface give you a natural feel of hundreds years of rain. The burnt color make the building have a natural look. It usually use for a new building, old building reform, commercial spaces, catering, public spaces, entertainment spaces, and background wall.

Application Tips

Needs to use adhesive on the backside of the product.

K-SERIES BRICK



326C4



052



087C4



228/030



Casa Bakudapa
by Jeghier Architect



Packing Information

Product Size (mm)	225x60
Box Size (mm)	460x260x160
pc/box	250
Kg / box	14-18
m ² / box	3.375

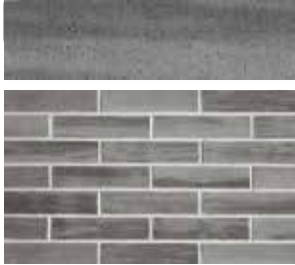
Product Description

K-Series Brick texture is uneven and rugged

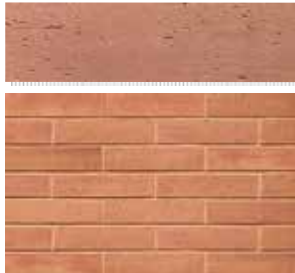
Application Tips

Needs to use adhesive on the backside of the product.

A-SERIES BRICK



221231



085089



221C4



326C4



Mentari Intercultural School



Rawamangun Residence
by Gayuh Budi Utomo



Excelso Coffee,
Surabaya



The Goods Café,
PIK Avenue

Packing Information

Product Size (mm)	240x60
Box Size (mm)	460x260x160
pc/box	450
Kg / box	23-26
m ² / box	6.48

Product Description

A-Series Brick surface is quite smooth. The color of the bricks has a natural look because it is from the clay itself. It is usually used in new buildings, old building reforms, commercial spaces, catering, public spaces, entertainment spaces, and background walls.

Application Tips

Needs to paste adhesive on the backside of the product.

JAGGED WOOD



JAGGED WOOD EVEREST



JAGGED WOOD ALPS



JAGGED WOOD OLYMPUS



Product Description

Jagged Wood product is light, bendable, and water resistant. It can be applied to wet zone, such as bathroom, and floors near swimming pool. It can also be applied for both exterior and interior.

Application Tips

Use the adhesive on the backside of the product. Leave 1–2 mm natural gap with 'Brick' style for installation. If the gap > 6mm, it is suggested to do the grouting.

Packing Information

Product Size (mm)	Box Size (mm)	pc/box	Kg / box	m ² / box
900x180	920x570x80	78	55–60	12.64



JAGGED WOOD ANDES



JAGGED WOOD EVEREST

ORIGINAL WOOD



ORIGINAL WOOD NILE



ORIGINAL WOOD RHINE



ORIGINAL WOOD SUEZ



Product Description

Original Wood product is light in weight, bendable and water resistant. It can be applied to wet zone, such as, bathroom, and floors near swimming pool. It can also be used both for exterior and interior application.

Application Tips

Use the adhesive on the backside of the product. Suggest to leave 1–2mm natural gap with ‘Brick’ style for installation. If the gap > 6 mm, it is suggested to do the grouting.

Packing Information

Product Size(mm)	Box Size (mm)	pc/box	Kg / box	m ² / box
900x180	920x570x80	78	55–60	12.64



ELEPHANTIASI



052



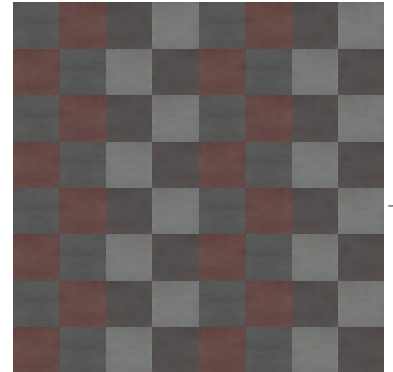
221



043



054 MCM Elephantiasi/315 MCM Croco
2 Size Combination 600x600, 100x100mm



031/043/326/315 Combination
600x600mm



Packing Information

Product Size (mm)	1500x600
Box Size (mm)	1520x620x65
pc/box	20
Kg / box	64-69
m ² / box	18

Product Description

Elephantiasi is a green product that are durable, water proof and fire proof. It can be applied to family spaces, commercial spaces, public spaces, office, entertainment, bathroom spaces and floor.

Application Tips

Need to use adhesive at the back of the product. If the joint gap > 6 mm, suggest to do grouting using grout, steel strip or wood strip, or frame it with wood.

DECORATIVE



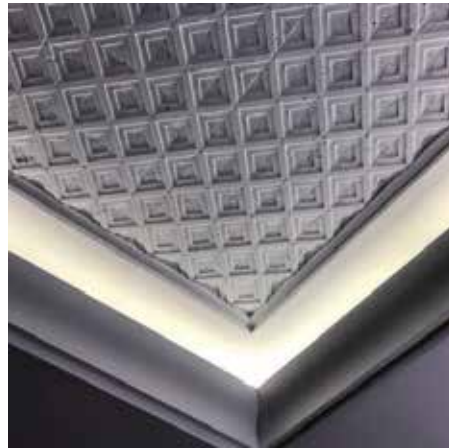
STACKLESQUARE



CUBE CUT



MOSAIC STONE



Packing Information

Product Size (mm)	300x300
m ² / box	1.44-2.7

Product Description

Decorative Series has a lot of different products with various textures. These products can be used both for interior and exterior. It can be applied to bed backdrop, ceiling, walling, bar and furniture background wall.

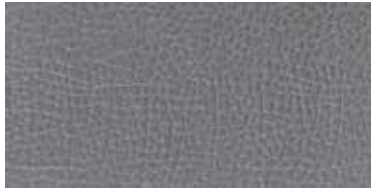
Application Tips

Need to paste adhesive evenly at the back of the products. The product's sides are uneven, will need to do sanding to even the sides before application.

COARSE LEATHER



052



031



025



043



221



315



052/025/221 3 Sizes Combination 1200x600
1200x300 1200x150mm



052/221/043/315 Combination
600x600mm

Packing Information

Product Size (mm)	1500x600
Box Size (mm)	1520x620x65
pc/box	20
Kg / box	64-69
m ² / box	18

Product Description

Coarse Leather is a green product that is durable and water resistant. It can be applied to family spaces, commercial spaces, entertainment, bathroom, and floor near swimming pool. It can be used both for exterior and interior.

Application Tips

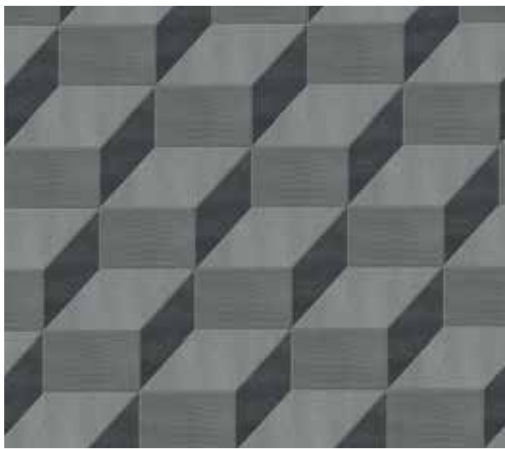
Need to paste adhesive at the back of the product. If the joint gap > 6 mm, suggest to do the grouting using grout, steel strip or wood strip.



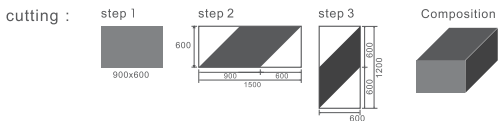
CROCO



221/315 2 Sizes Combination 600x600 100x100mm



030/031/043 3 Sizes Combination



221



038



043



315



030/031/043

Packing Information

Product Size (mm)	1500x600
Box Size (mm)	1520x620x65
pc/box	20
Kg / box	64-69
m ² / box	18

Product Description

Croco design is a green product that is durable and water resistant. It can be applied to family spaces, commercial spaces, office, entertainment, bathroom, furniture, and floor near swimming pool.

Application Tips

Need to paste adhesive at the back of the product. If the joint gap > 6mm, suggest to do the grouting using grout, steel strip or wood strip.

WEAVING



052



054



054 Combination 600x600mm



054/058/360 Combination 600x600mm



201



056



058/360/308/326 Combination 600x600mm



052/025/221 Combination 600x600mm



203



087



206



362

Packing Information

Product Size (mm)	Box Size (mm)	pc/box	Kg/box	m ² /box
1500x600	1520x620x65	10	62-68	9

Product Description

Weaving has a similar texture as natural woven but it is not easy to fade. The texture is really great and it is water resistant so it can be used for outdoor application.

Application Tips

Need to paste adhesive at the back of the product. If the joint gap > 6 mm, suggest to do the grouting using grout, steel strip or wood strip, or frame it with wood.



Important Notice

Customer should understand and accept the following:

1. Products Appearance Quality

I) PHOMI' s manufacturing process has been designed to imitate the random beauty and nature of real stone. As such, stone surfaces may contain small air holes or surface anomalies. These differences add to the overall character of the stone and should not be considered to be a manufacturing defect. Every piece MCM product inherently lack uniformity and is subject to variation in aesthetics, color, finish, thickness, density etc.

II) It is normal if products contain few Residual mesh fringed which does not affect installation .

III) It is normal if product size has small variation on diagonal (less than 2 mm) .

IV) It is normal that there is some color variation occur on products within the same production batch or across different production batches. These variations add to the overall character of the stone.

2. Production Cycle

Customer acknowledges that the Products has a 30-45 business days lead time for the Pre-order and custom products to be available for shipping from the factory warehouse to the project site.

3. Examine Products

Customer should conduct inspection when the products arrived. All purchased goods are non-refundable nor exchange.

4. Storage Conditions

PHOMI' s product can absorb smell due to its breathable features. Customer should keep the storage environment odorless, dry and with good air circulation during transportation, storage and reselling on the Products.

** Customer should aware and communicate clearly in advance about what mentioned above before placing an orders.

NEW PRODUCTS
RELEASING SOON



REMARKS

* This catalogue is the 10th printing versions, some contents have been updated, we use this catalogue as standard when placing an orders.

* All products and the artworks from the catalogue just for reference, the colors and patterns, should base on the actual products.

All rights reserved. No part of this publication may be reproduced, distributed, or transmitted in any form or by any means without prior written permissions.

PHOMI

www.phomimcm.com